

The Greyster HOME G2™ is a compact, automated graywater system designed for residential use. It captures water from showers and bathtubs, reusing it after treatment for toilet flushing. By reducing indoor water consumption and wastewater output by 20-25%, it eliminates the need to waste drinking water on flushing toilets. With the Greyster HOME G2™, you can conserve water effortlessly.

NEXT GENERATION FEATURES

- Increased Durability
- Autonomous Operation
- Greater Efficiency
- Low Maintenance
- User-friendly Interface (Mobile App)
- Enhanced Reporting Capabilities

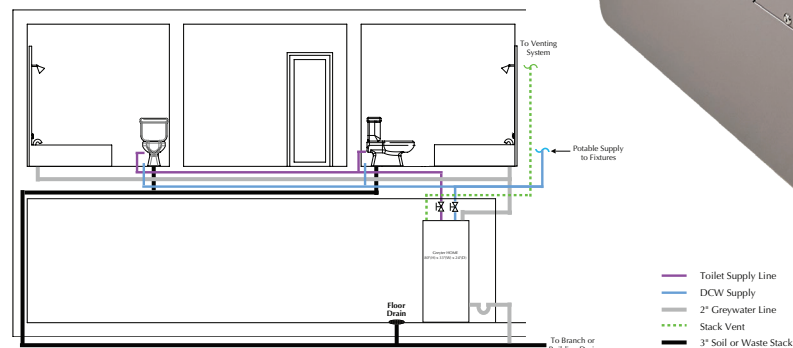


The Greyster HOME G2™ is ideal for new construction and can be installed in single, two story slab, crawl space or full height basement homes

The Greyster HOME G2™ plays an important part in helping municipalities implement long term, sustainable water management strategies and its use in new home construction could enable builders to access municipal incentives for water conservation such as:

- Greater density of homes in a development project
- Lower water connection fees
- Development credits
- Tax Credits
- Accelerated permit approvals

Greyster HOME - Finished Basement, Mechanical Room, or Garage



Greyster HOME - Single Story Outdoor Solution (No Opportunity for Gravity Feed)

