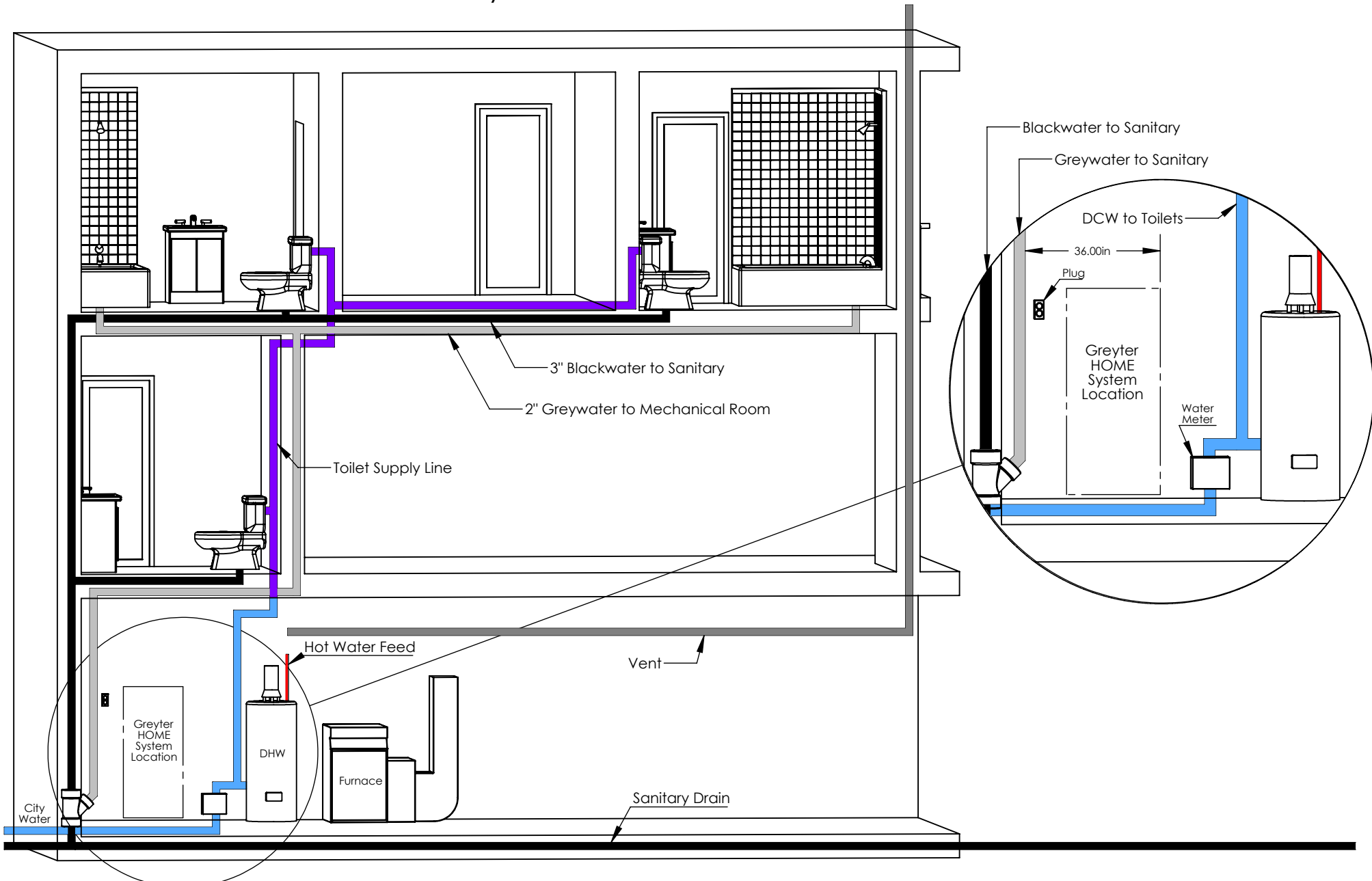


Greyter Water Ready: Greywater Tied into 3" Waste Stack



1. Isolate greywater -2 Showers
2. Homerun greywater to mechanical room -2" drain ties into 3" waste stack at the lowest point (4"x4"x2" wye connection with cleanout)
3. Isolate supply lines to toilets
4. Have vent accessible for future use (capped or tied into greywater line)
5. Single gang 15Amp, 120V plug located near 2" greywater drain, 48" above finished floor